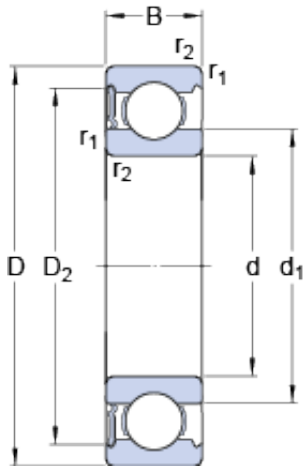




BEARING CORP. LTD.



100 mm x 150 mm x 24 mm SKF 6020-RS1 deep groove ball bearings

Bearing No. 6020-RS1

6020-RS1 Bearing 2D drawings and 3D CAD models

Size	150x100x24 mm
Bore Diameter	150 mm
Outer Diameter	100 mm
Width	24 mm
d	100 mm
D	150 mm
B	24 mm
d ₁	115,95 mm
D ₂	138,3 mm
r _{1,2} - min.	1,5 mm
d _a - min.	107 mm
d _a - max.	115,9 mm
D _a - max.	143 mm
r _a - max.	1,5 mm
Basic dynamic load rating - C	63,7 kN
Basic static load rating - C ₀	54 kN
Fatigue load limit - P _u	2 kN
Limiting speed	2600 r/min
Calculation factor - k _r	0,025
Calculation factor - f ₀	15,9
Category	Single Row Ball Bearings
Inventory	0.0
Manufacturer Name	SKF
Minimum Buy Quantity	N/A



BEARING CORP. LTD.

Weight / Kilogram	1.272
Product Group	B00308
Enclosure	1 Seal
Precision Class	ABEC 1 ISO P0
Maximum Capacity / Filling Slot	No
Rolling Element	Ball Bearing
Snap Ring	No
Internal Special Features	No
Cage Material	Steel
Enclosure Type	Contact Seal
Internal Clearance	C0-Medium
Inch - Metric	Metric
Long Description	100MM Bore; 150MM Outside Diameter; 24MM Outer Race Width; 1 Seal; Ball Bearing; ABEC 1 ISO P0; No Filling Slot; No Snap Ring; No Internal Special Features; C0-Medium Internal Clearance; Steel Cage;
Other Features	Deep Groove NBR Seal
Category	Single Row Ball Bearing
UNSPSC	31171504
Harmonized Tariff Code	8482.10.50.68
Noun	Bearing
Keyword String	Ball
Manufacturer URL	http://www.skf.com
Weight / LBS	2.8878
Outside Diameter	5.906 Inch 150 Millimeter
Outer Race Width	0.945 Inch 24 Millimeter
Inner Race Width	0 Inch 0 Millimeter
Bore	3.937 Inch 100 Millimeter
d ₁	115.95 mm



BEARING CORP. LTD.

D_2	138.3 mm
$r_{1,2}$ min.	1.5 mm
d_a min.	107 mm
d_a max.	115.9 mm
D_a max.	143 mm
r_a max.	1.5 mm
Basic dynamic load rating C	63.7 kN
Basic static load rating C_0	54 kN
Fatigue load limit P_u	2.04 kN
Calculation factor k_r	0.025
Calculation factor f_0	15.9
Mass bearing	1.27 kg