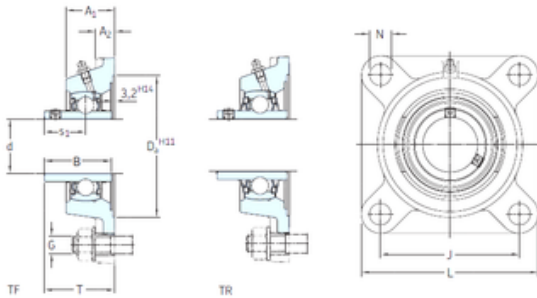




# BEARING CORP. LTD.

## SKF FY 5/8 TF bearing units

Bearing No. FY 5/8 TF



FY 5/8 TF Bearing 2D drawings and 3D CAD models

Bore Diameter	15,875 mm
Width	27,4 mm
d	15,875 mm
s1	15,9 mm
A1	23,4 mm
B	27,4 mm
G	10 mm
J	54 mm
L	76,2 mm
T	30,6 mm
A2	9,9 mm
Weight	0.95 Kg
Basic dynamic load rating (C)	9,56 kN
Basic static load rating (C0)	4,75 kN
Fatigue load limit (Pu)	0,2
Category	Flange Block Bearings
Inventory	0.0
Manufacturer Name	SKF
Minimum Buy Quantity	N/A
Weight / Kilogram	0.469
Product Group	M06110
Number of Mounting Holes	4
Mounting Method	Set Screw
Housing Style	4 Bolt Square Flange Block
Rolling Element	Ball Bearing
Housing Material	Cast Iron



## BEARING CORP. LTD.

Expansion / Non-expansion	Non-expansion
Mounting Bolts	3/8 Inch
Relubricatable	Yes
Insert Part Number	YAR 203-010-2F
Seals	M Seal
Housing Configuration	1 Piece Solid
Pilot Configuration	No Pilot
Inch - Metric	Inch
Long Description	4 Bolt Square Flange Block; 5/8" Bore; 3" Bolt Circle; 2-1/8" Bolt Spacing; 1 Piece Solid; Set Screw Mount; Cast Iron; Ball Bearing; 1-3/32" Length Thru Bore; Relubricatable; M Sea
Other Features	Single Row   Standard Duty   Wide Inner Race   Open End   Has Flinger   Y Bearing
Category	Flange Block
UNSPSC	31171501
Harmonized Tariff Code	8483.20.40.40
Noun	Bearing
Keyword String	Flanged
Manufacturer URL	<a href="http://www.skf.com">http://www.skf.com</a>
Manufacturer Item Number	FY 5/8 TF
Weight / LBS	1.3
Nominal Bolt Circle Diameter Round	3 Inch   76 Millimeter
Bolt Spacing	2.125 Inch   53.98 Millimeter
Length Thru Bore	1.094 Inch   27.8 Millimeter
Bore	0.625 Inch   15.875 Millimeter
Cartridge Pilot Depth	0 Inch   0 Millimeter
Cartridge Pilot Diameter	0 Inch   0 Millimeter



## BEARING CORP. LTD.

Housing material	Cast iron
$D_a$	55.6 mm
$D_{b1}$	50 mm
$D_{b2}$	53 mm
A	26 mm
$A_1$	11 mm
$A_3$	3.2 mm
N	11.5 mm
$s_1$	15.9 mm
$R_G$	1/4-28 UNF
$R_1$	19 mm
$D_N$	6.5 mm
$SW_N$	7 mm
$G_N$	1/4-28 SAE-LT
$J_6$	66 mm
$J_7$	14.5 mm
$N_4$	4 mm
Basic dynamic load rating C	9.56 kN
Basic static load rating $C_0$	4.75 kN
Fatigue load limit $P_u$	0.2 kN
Limiting speed	9500 r/min
Mass bearing unit	0.38 kg
Thread grub screw $G_2$	#10-32 UNF
Hexagonal key size for grub screw N	2.381 mm
Recommended tightening torque for grub screw	4 N · m
Recommended diameter for attachment bolts, mm G	10 mm
Recommended diameter for attachment bolts, inch G	0.375 in